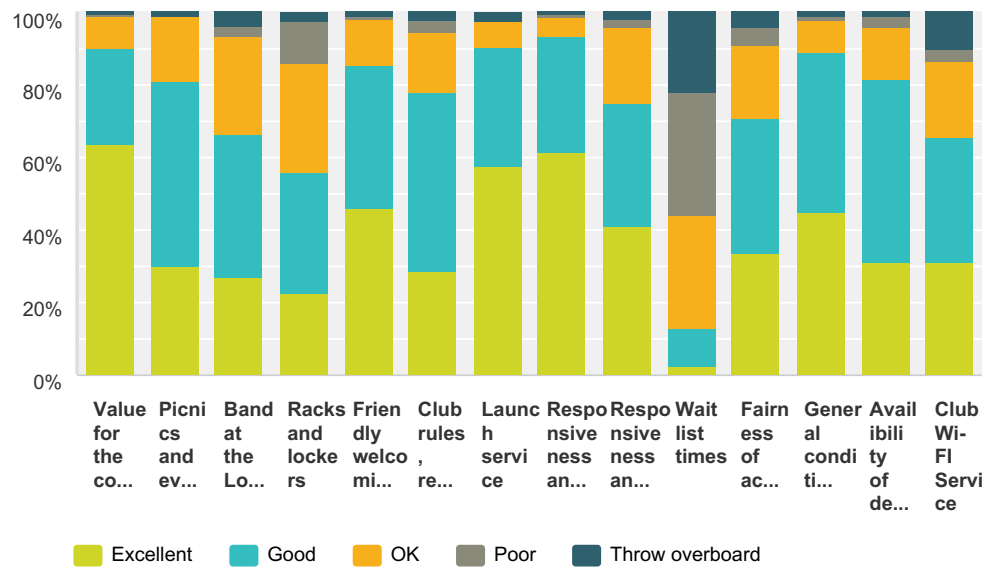


### Q1 Please rate the club on the following:

Answered: 212 Skipped: -1

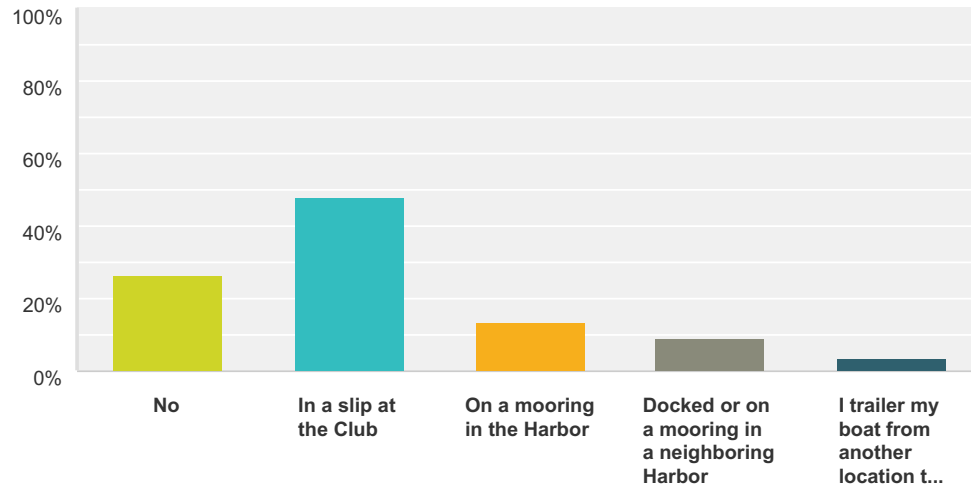


	Excellent	Good	OK	Poor	Throw overboard	Total
Value for the cost of membership and amenities	63.46% 132	26.44% 55	9.13% 19	0.48% 1	0.48% 1	208
Picnics and events	30.06% 49	50.92% 83	17.79% 29	0.00% 0	1.23% 2	163
Band at the Lobsterbake	26.92% 21	39.74% 31	26.92% 21	2.56% 2	3.85% 3	78
Racks and lockers	22.66% 29	33.59% 43	29.69% 38	11.72% 15	2.34% 3	128
Friendly welcoming atmosphere	46.12% 95	39.32% 81	12.62% 26	0.97% 2	0.97% 2	206
Club rules, regulations and enforcement	28.50% 57	49.50% 99	16.50% 33	3.50% 7	2.00% 4	200
Launch service	57.65% 49	32.94% 28	7.06% 6	0.00% 0	2.35% 2	85
Responsiveness and Friendliness of Dock Staff	61.66% 119	31.61% 61	5.18% 10	1.04% 2	0.52% 1	193
Responsiveness and Approachability of Executive Board	40.88% 65	33.96% 54	21.38% 34	1.89% 3	1.89% 3	159
Wait list times	2.58% 4	10.32% 16	30.97% 48	34.19% 53	21.94% 34	155
Fairness of access to the Club amenities (based on date of membership, not time on list)	33.52% 60	37.43% 67	20.11% 36	5.03% 9	3.91% 7	179
General condition and appearance of the Club	44.98% 94	44.02% 92	9.09% 19	0.96% 2	0.96% 2	209

Availibility of deck tables and chairs	<b>31.12%</b> 61	<b>50.51%</b> 99	<b>14.29%</b> 28	<b>3.06%</b> 6	<b>1.02%</b> 2	196
Club Wi-Fi Service	<b>30.86%</b> 25	<b>34.57%</b> 28	<b>20.99%</b> 17	<b>3.70%</b> 3	<b>9.88%</b> 8	81

## Q2 Do you currently have boat?

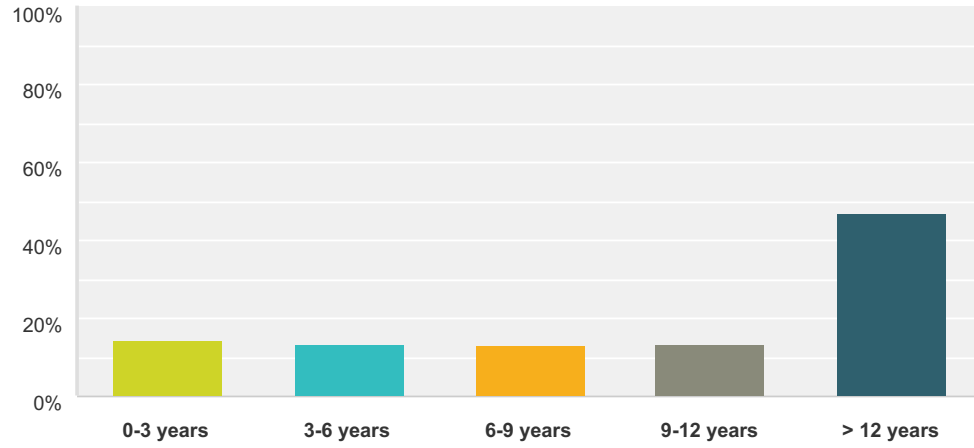
Answered: 209 Skipped: 2



Answer Choices	Responses
No	26.32% 55
In a slip at the Club	47.85% 100
On a mooring in the Harbor	13.40% 28
Docked or on a mooring in a neighboring Harbor	9.09% 19
I trailer my boat from another location to use it	3.35% 7
<b>Total</b>	<b>209</b>

### Q3 How long have you been a member?

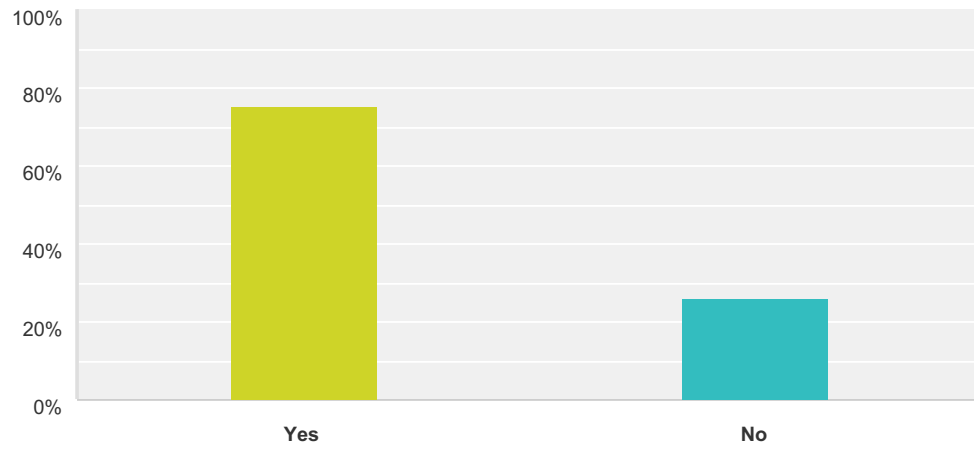
Answered: 211 Skipped: 0



Answer Choices	Responses	Count
0-3 years	14.22%	30
3-6 years	13.27%	28
6-9 years	12.80%	27
9-12 years	13.27%	28
> 12 years	46.92%	99
<b>Total Respondents: 211</b>		

### Q4 Do you support the proposed dock expansion to add 100 slips to the club?

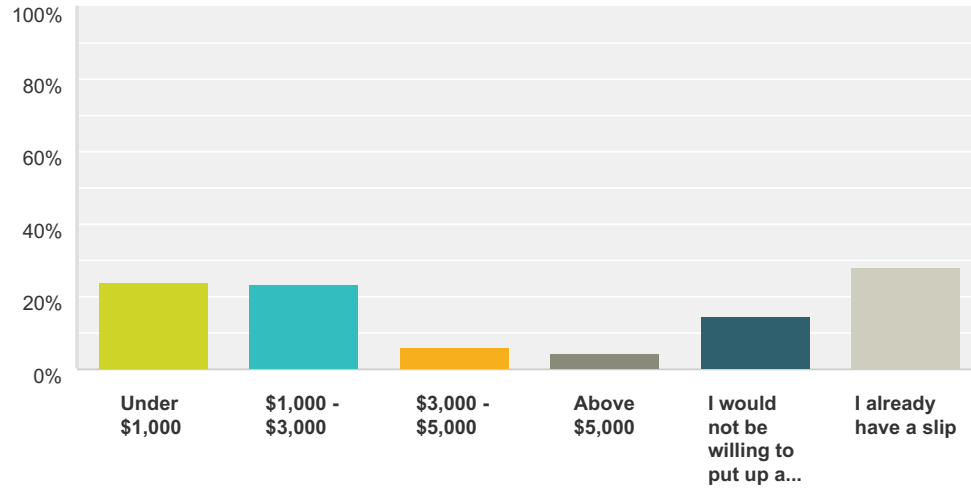
Answered: 201 Skipped: 10



Answer Choices	Responses	
Yes	75.12%	151
No	25.87%	52
<b>Total Respondents: 201</b>		

**Q5 For future slipholders only .... Would you be willing to put up a Refundable Bond to help finance the proposed dock expansion? If so, then how much? Keep in mind that annual slip fees at the Club range from \$190 (Class 15 slip) to \$915 (Class 1 slip) for the season.**

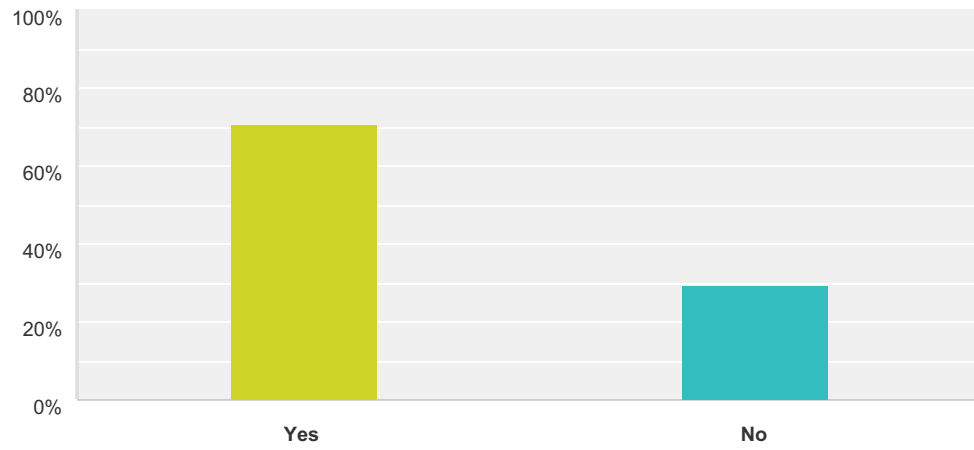
Answered: 150 Skipped: 61



Answer Choices	Responses
Under \$1,000	24.06% 32
\$1,000 - \$3,000	23.31% 31
\$3,000 - \$5,000	6.02% 8
Above \$5,000	4.51% 6
I would not be willing to put up a Refundable Bond	14.29% 19
I already have a slip	27.82% 37
<b>Total</b>	<b>133</b>

### Q6 Did you know the waiting lists for smaller boats are much shorter?

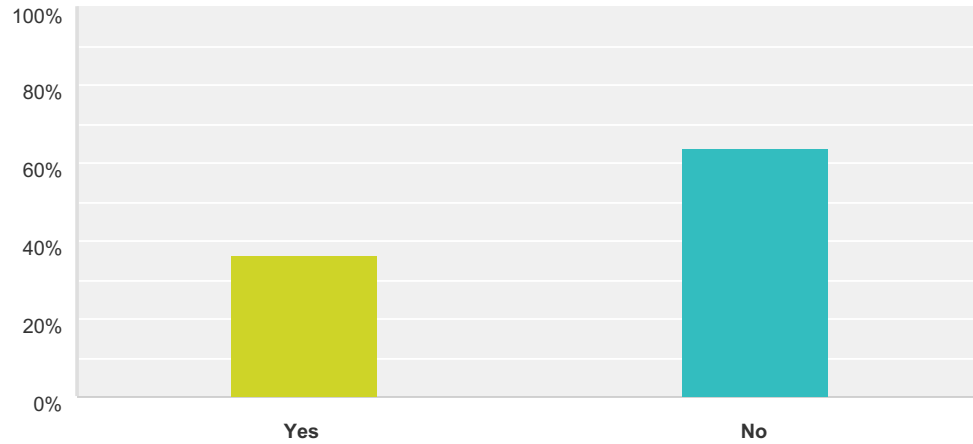
Answered: 200 Skipped: 11



Answer Choices	Responses	
Yes	70.50%	141
No	29.50%	59
<b>Total</b>		<b>200</b>

**Q7 Did you know the Club has a Facebook page with current, interactive information about the club?  
Facebook.com/darienboatclub.**

Answered: 205 Skipped: 6

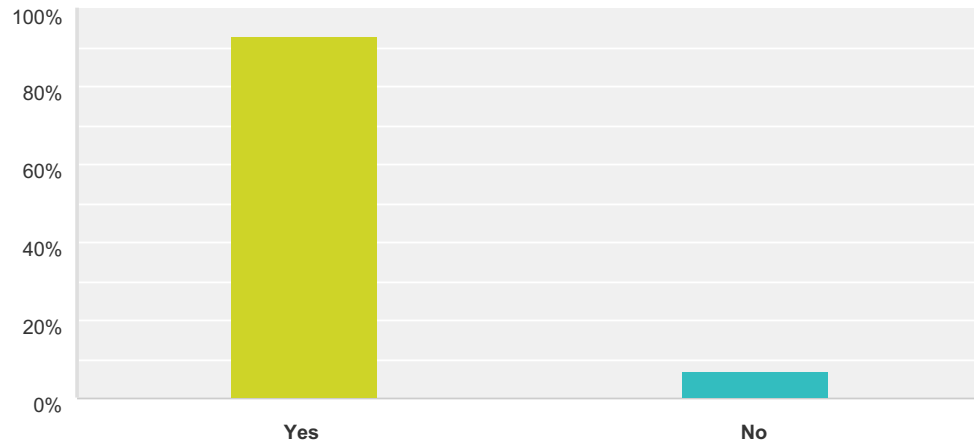


Answer Choices	Responses
Yes	36.10% 74
No	63.90% 131
<b>Total</b>	<b>205</b>



### Q8 Do you know the Club has a Website with tons of information about the club? darienboatclub.org

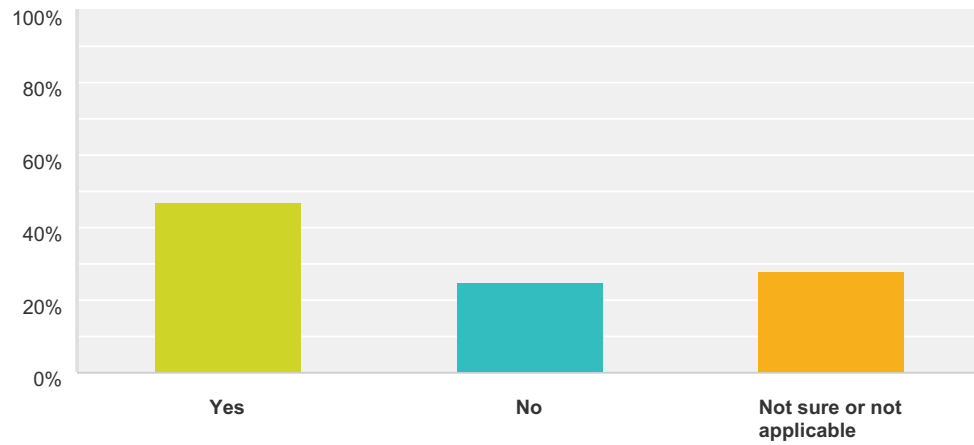
Answered: 202 Skipped: 9



Answer Choices	Responses	
Yes	93.07%	188
No	6.93%	14
<b>Total</b>		<b>202</b>

### Q9 Did you feel the wait lists are transparent and easy to understand?

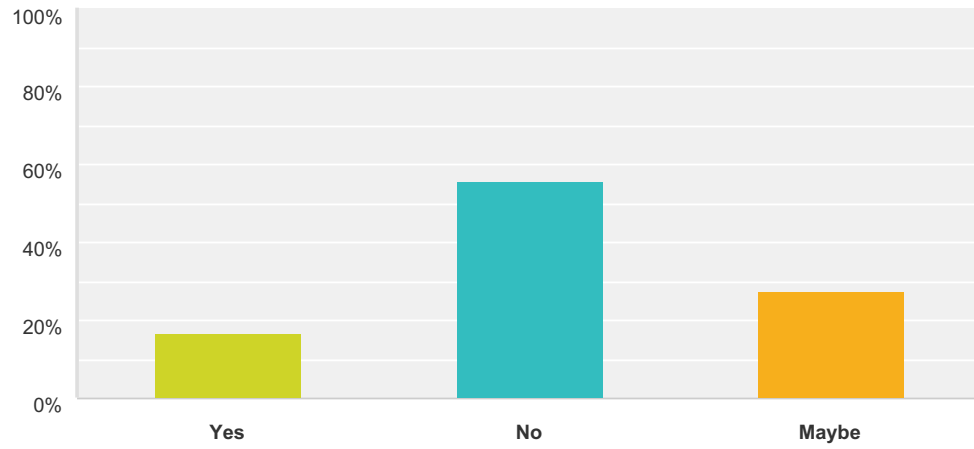
Answered: 206 Skipped: 5



Answer Choices	Responses	
Yes	47.09%	97
No	24.76%	51
Not sure or not applicable	28.16%	58
<b>Total</b>		<b>206</b>

### Q10 Would you be interseted in an online mooring service with real-time wait lists even if it involved extra cost?

Answered: 193 Skipped: 18



Answer Choices	Responses	
Yes	16.58%	32
No	55.96%	108
Maybe	27.46%	53
<b>Total</b>		<b>193</b>

**Q11 Please give us any other feedback:**

Answered: 64 Skipped: 147